



ATEX 3rd Party Certified
 CE 0081 II 2 GD
 Ex d IIA T3 Gb
 Ex t IIIC T200°C Db IP6X
 LCIE 03 ATEX 6297



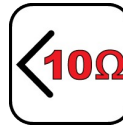
GUARANTEED for the Safe Recovery of Combustible/Conductive Dusts

ESD Safe Vacuum Cleaners for Hazardous Locations are designed to prevent ignition hazards. We use metal parts or Static Dissipative Powder Coating to prevent Electrostatic Discharge (ESD)

Characteristics



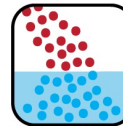
EX Certified



Less than 10 ohms



Dry Recovery



Wet Mix - Water



HEPA - Included



High Efficiency



SS 304



Detachable Tank



Coalescing Filter Element



- Immersion Separator "Wet (Water) Mix" - Only meant to be used with water (no oil)
- Designed for the recovery and INERTIZATION of conductive and explosive dust, such as Aluminum, Magnesium, Zirconium and other commercial alloys, into a Liquid Immersion Bath
- Legally certified explosion proof/dust ignition proof.
- Precipitating Dust - complies with NFPA 484 method
- Less than 10 Ohms of resistivity.
- Coalescing Filter Element (CFE) for moisture removal
- HEPA Filter - Included with an efficiency of 99.995% on 0.3 micron. Tested: IEST RP-CC001 H14 by MPSS method as per EN 1822 and OSHA compliant. All of our HEPA Vacuum Cleaners are Aerosol Leak Tested before leaving our facility.
- Electrically Operated
- Stainless Steel Type 304 Interceptor Tank.
- Recovery capacity of 11 lbs (5 Kg) of dust into 6.5 gallons (25 liters) of water (no oil)
- Degassing Vent allows gas to be evacuated automatically from the unit
- Portable and equipped with single or dual SD* suction hose connector.
- Detachable Recovery Tank (DT) for easy disposal of recovered materials
- Equipped with a Liquid Level Indicator.
- Tiger-Vac® carries a large inventory of shrouded sanders, grinders, dustless drill kits along with a large suction port for maximum dust recovery
- - OSHA Combustible Dust National Emphasis Program "NEP" NRTL approved - NRTL Certified US/Canada - Hazardous Locations as defined in NFPA 70 - Meets NFPA 484-2015 Guidelines.
- At Tiger-Vac®, Safety has no compromise.

Specifications

EXP1-IT (63L) EX (CFE) SK HEPA FOR HAZLOCS	113167B
Model Name	EXP1-IT (63L) EX (CFE) SK HEPA
Type (Powerhead)	Electric
TEFC Motor	Yes
Voltage	230 V
Hertz	50 Hz
Phase	Single
Wattage	1000 W
Power	1 kW
Amperage	4.5 amps.
Air Flow	224 m ³ /h
Vacuum Pressure	1550 mm H ₂ O
Sound Level	78/85 dB(A)
Plug Type	Not Included
Suction Inlet	50 mm
Cart Type	Detachable Tank (DT)
Filter Cleaning	None
Length	79 cm
Width	61 cm
Weight (Vacuum Only)	76.2 kg.
Height	160 cm
Cord Length	15 m

Please note that specifications are subject to change without notice

Use only recommended tools & accessories



EXP1-IT (63L) with Recovery Tank removed



Coalescing HEPA filter (Upstream) - Included



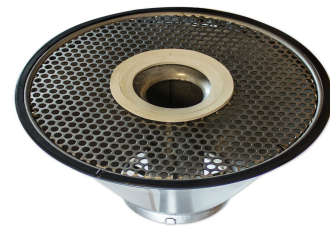
Mist Arrester Pack - Included



Liquid Level Indicator Tube - Included



Sieve Basket - Included



Cone for Interceptors - Included



Wye Connector - Included



Suction/Airline Hose Assembly, Static Dissipative and Conductive - Included



EXP1-IT (63L) with optional Dust Extraction Arm

European Headquarters

Tiger-Vac Europa S.R.L.
Via Marie Curie 17
Zona Industriale Ponte Rizzoli
Ozzano Emilia, BO 40064

Tel: ((39) 051 79.53.52)
Fax: ((39) 051 4695077)
Website: <http://www.tiger-vac.eu>
Email: info@tiger-vac.it

International Headquarters

Tiger-Vac International Inc.
2020 Dagenais Blvd. Ouest
Laval, Quebec
Canada H7L 5W2

Tel: (450-625-0099)
Fax: (450-625-3388)
Website: <http://www.tiger-vac.com>
Email: sales@tiger-vac.com



ATEX 3rd Party Certified
CE 0081 II 2 GD
Ex d IIA T3 Gb
Ex t IIIC T200°C Db IP6X
LCIE 03 ATEX 6297

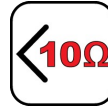


GUARANTEED for the Safe Recovery
of Combustible/Conductive Dusts

ESD Safe Vacuum Cleaners for Hazardous
Locations are designed to prevent ignition
hazards.
We use metal parts or Static Dissipative
Powder Coating to prevent Electrostatic
Discharge (ESD)



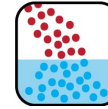
EX Certified



Less than 10
ohms



Dry Recovery



Wet Mix -
Water



HEPA -
Included



High Efficiency



SS 304



Detachable
Tank



Coalescing
Filter Element

Specifications for EXP1-IT (63L) EX (CFE) SK HEPA FOR HAZLOCS

Name	Part Number	Voltage	Hertz	Phase	Wattage	Power	Amperage	Air Flow	Vacuum Pressure	Plug Type
EXP1-IT (63L) EX (CFE) SK HEPA	113167B	230 V	50 Hz	Single	1000 W	1 kW	4.5 amps.	224 m ³ /h	1550 mm H ₂ O	Not Included
Dimensions: H160 cm x W61 cm x L79 cm		Weight: 76.2 kg.		Sound Level: 78/85 dB(A)						
Description: Immersion Separator. Only meant to be used with water (no oil)										

Please note that specifications are subject to change without notice

Technical Sheet for EXP1-IT (63L) EX (CFE) SK HEPA FOR HAZLOCS

COALESCING FILTER ELEMENT - Included

Part #	Description
215792A-HEPA	REPLACEMENT COALESCING FILTER ELEMENT, HEPA GRADE, 4.75" HIGH, w/NITRILE GASKET #219259-04

SIEVE BASKET AND ACCESSORIES - Included

Part #	Description
218985	SIEVE BASKET WITH CLOSED BASE FOR IT-25, STAINLESS STEEL AISI 304

MIST ARESTOR PACK - Included

Part #	Description
218284	MIST ARRESTOR PACK ASSEMBLY (ALUMINUM SCREENS WITH STAINLESS STEEL MESH)

TOOLS AND ACCESSORIES - Included

Part #	Description
303019D	SUCTION/AIR HOSE STATIC CONDUCTIVE CRUSHPROOF 20'(6m) (15'x1.25" + 5'x1") w/6'(1.8m)SLEEVE
211029D	AIR SUPPLY HOSE ASSEMBLY SD*, 0.5" x 25' w/ONE FEMALE QUICK DISC. & w/0.5" MALE NPT ON OTHER END
501503	WYE CONNECTOR ASSEMBLY 2"(50mm) FEMALE CAMLOCK ALUMINUM x (2) 1.25"(32mm) HOSE SHANKS, WITH ONE PLUG
219390	TUBE BRUSH, WHITE NYLON, 2" DIAMETER X 6" LONG, 36" OVERALL

Ø1.5" (Ø38mm) EXPLOSION PROOF TOOLS & ACCESSORIES - MANDATORY FOR USE WHEN RECOVERING CONDUCTIVE, METAL & PYROTECHNIC DUST. STATIC DISSIPATIVE (LESS THAN 10 OHMS) - Optional

Part #	Description
--------	-------------

381400B	KANAFLEX SUCTION HOSE ASMBLY SD* 1.5"(38mm) x 10'(3m) w/HOSE CUFF w/RING, FOR USE w/2" CAMLOCK INLET
381364A	WAND ASSEMBLY (2pc), 1.5" X 54", S/S WITH ALUMINUM TOOL COUPLING, w/TAPER FOR USE w/HOSE CUFF w/RING
381236	UNIVERSAL TOOL SD* w/CONDUCTIVE BRUSH STRIPS, RUBBER BLADES, BRASS AXLE & WHEELS, 1.5" x18",ALUMINUM
383461D	CONICAL NOZZLE ASSEMBLY(STRAIGHT)7.5"(19cm)CONDUCTIVE RUBBER FOR HOSE CUFF W/RING (383461M+381147D)
381284D	TIGER CLAW ASSEMBLY CONDUCTIVE RUBBER FOR HOSE CUFF WITH RING
381185DA	ROUND BRUSH, ALUMINUM SD*, 5"(12.5cm), WITH CONDUCTIVE BRISTLES, FOR USE w/HOSE CUFF w/RING
211065B	MULTIMETER

Ø1.5" (Ø38mm) STATIC CONDUCTIVE TOOLS AND ACCESSORIES (RESISTIIVITY OF 10/3 - 10/5) - Optional

Part #	Description
383440B	STATIC CONDUCTIVE CRUSHPROOF SUCTION HOSE ASMBLY(NO WIRE) 1.5"(38mm) x 10'(3m) FOR 2" CAMLOCK INTAKE
381364	DOUBLE BEND WAND ASSEMBLY (2pc) 1.5"(38mm) x 54"(137cm), STAINLESS STEEL w/ALUMINUM TOOL COUPLING
381236	UNIVERSAL TOOL SD* w/CONDUCTIVE BRUSH STRIPS, RUBBER BLADES, BRASS AXLE & WHEELS, 1.5" x18",ALUMINUM
381188	CREVICE TOOL SD*, 1.5" (38mm) x 11" (28cm), ALUMINUM
381185A	DUSTING BRUSH, SD*, WITH STAINLESS STEEL COUPLING, WITH CONDUCTIVE BRISTLES, 5"(12.5cm), ALUMINUM
383462	CONICAL NOZZLE ASMBLY w/CURVED TIP, 10"(25cm) CONDUCTIVE RUBBER, PRESSURE FIT (323562+381155A-H)

MALE PLUG AND FEMALE RECEPTACLE - CLASS I - GROUP D AND CLASS II GROUPS F & G - Optional

Part #	Description
211912	PLUG, EXPLOSION PROOF, 120V 15AMPS, MODEL UGP-15231QW, NEMA CONFIGURATION 5-15P
211913	RECEPTACLE EXPLOSION PROOF MODEL CRH ENR5201, 120V, 1PHASE, 15 & 20 AMPS

DUST EXTRACTION ARM - Optional

Part #	Description
500630	ELBOW ASMBLY w/2" FEMALE CAMLOCK w/FLANGE FOR 2" DUST EXTRACTION ARM, STAINLESS STEEL
218022	DUST EXTRACTION ARM, DIAM: 2"(50mm) x REACH: 3.7'(1.125m), ALUMINUM & CONDUCTIVE POLYPROPYLENE
218022-01	SUCTION PEN ATTACHMENT FOR DUST EXTRACTION ARM, 2"(50mm) x 12" (310mm)
218022-02	ROUND HOOD FOR DUST EXTRACTION ARM, 2"(50mm) x 8" (200mm), ALUMINUM
218022-03	ROUND HOOD FOR DUST EXTRACTION ARM, 2"(50mm) x 15" (385mm), CONDUCTIVE POLYCARBONATE
218022-05	RECTANGULAR HOOD 13" x 9", FOR 2" DUST EXTRACTION ARM, CONDUCTIVE POLYCARBONATE

AVAILABLE UPGRADES - Optional

Part #	Description
218169-UPGRADE	UPGRADE FOR HEAVY DUTY CART ASSEMBLY, FROM POWDER COATED STEEL TO STAINLESS STEEL TYPE 304



L C I E

- | | |
|--|--|
| <p>1 AVENANT D'ATTESTATION D'EXAMEN CE DE TYPE</p> <p>2 Appareil ou système de protection destiné à être utilisé en atmosphères explosibles (Directive 94/9/CE)</p> <p>3 Numéro de l'avenant :
LCIE 03 ATEX 6297 / 03</p> <p>4 Appareil ou système de protection :
Aspirateur
Type : EXP1-xx (yy)</p> <p>5 Demandeur : TIGER VAC INTERNATIONAL INC.</p> <p>15 DESCRIPTION DE L'AVENANT</p> <p>Mise à jour normative suivant les normes EN 60079-0:2009, EN 60079-1:2007 et EN 60079-31:2009.</p> <p>Les équipements sont les suivants :
EXP1-25(IT), EXP1-25(HRS), EXP1-25(AC), EXP1-10(DT), EXP1-10(4W), EXP1-15(4W), EXP1-15(TC), EXP1-25(TC), EXP1-55(TC).</p> <p>Les résultats des vérifications et essais figurent dans le rapport confidentiel N° 114100-626870-02</p> <p><u>Paramètres spécifiques du ou des modes de protection concernés :</u></p> <p>Inchangés.</p> <p><u>Le marquage doit être :</u></p> <p>Modifié comme suit :
TIGER VAC INTERNATIONAL INC.
Adresse : ...
Type : ... (l'un des types mentionnés ci-dessus)
N° de fabrication : ... Année de fabrication : ...</p> <p>Option 1 : moteur type 114560(120V) et 114587(240V) :
⊗ II 2GD Ex d IIA T3 Gb Ex t IIIC T200°C Db IP6X</p> <p>Option 2 : moteur type 122055-00(240V) :
⊗ II 2GD Ex d IIA T4 Gb Ex t IIIC T120°C Db IP65</p> <p>LCIE 03 ATEX 6297
AVERTISSEMENT- NE PAS OUVRIR SOUS TENSION</p> | <p>1 SUPPLEMENTARY EC TYPE EXAMINATION CERTIFICATE</p> <p>2 Equipment or protective system intended for use in potentially explosive atmospheres (Directive 94/9/EC)</p> <p>3 Supplementary certificate number :
LCIE 03 ATEX 6297 / 03</p> <p>4 Equipment or protective system :
Vacuum cleaner
Type : EXP1-xx (yy)</p> <p>5 Applicant : TIGER VAC INTERNATIONAL INC.</p> <p>15 DESCRIPTION OF THE SUPPLEMENTARY CERTIFICATE</p> <p>Normative update according to standards EN 60079-0:2009, EN 60079-1:2007 and EN 60079-31:2009.</p> <p>The equipments are follow :
EXP1-25(IT), EXP1-25(HRS), EXP1-25(AC), EXP1-10(DT), EXP1-10(4W), EXP1-15(4W), EXP1-15(TC), EXP1-25(TC), EXP1-55(TC).</p> <p>The examination and test results are recorded in confidential report N° 114100-626870-02</p> <p><u>Specific parameters of the concerned protection mode:</u></p> <p>Unchanged.</p> <p><u>The marking shall be :</u></p> <p>Modified as following :
TIGER VAC INTERNATIONAL INC.
Address: ...
Type: ... (one of types mentioned above)
Serial number: ... Year of construction : ...</p> <p>Option 1: motor type 114560(120V) and 114587(240V) :
⊗ II 2GD Ex d IIA T3 Gb Ex t IIIC T200°C Db IP6X</p> <p>Option 2 : motor type 122055-00(240V) :
⊗ II 2GD Ex d IIA T4 Gb Ex t IIIC T120°C Db IP65</p> <p>LCIE 03 ATEX 6297
WARNING-DO NOT OPEN WHEN ENERGIZED</p> |
| <p>16 DOCUMENTS DESCRIPTIFS</p> <p>Dossier de certification N° TVATEX1206A rév.6 du 08/06/2012.
Ce dossier comprend 2 rubriques (18 pages).</p> <p>17 CONDITIONS SPECIALES POUR UNE UTILISATION SURE</p> <p>Néant.</p> | <p>16 DESCRIPTIVE DOCUMENTS</p> <p>Certification file N° TVATEX1206A rev.6 dated 06/08/2012.
This file includes 2 items (18 pages).</p> <p>17 SPECIAL CONDITIONS FOR SAFE USE</p> <p>None.</p> |

Seul le texte en français peut engager la responsabilité du LCIE. Ce document ne peut être reproduit que dans son intégralité, sans aucune modification.
The LCIE's liability applies only on the French text. This document may only be reproduced in its entirety and without any change



13 ANNEXE

14 AVENANT D'ATTESTATION D'EXAMEN CE DE TYPE

LCIE 03 ATEX 6297 / 03

18 EXIGENCES ESSENTIELLES DE SECURITE ET DE SANTE

Couvertes par les normes EN 60079-0:2009, EN 60079-1:2007 et EN 60079-31:2009.

19 VERIFICATIONS ET ESSAIS INDIVIDUELS

Néant.

Fontenay-aux-Roses, le 19 juillet 2012

13 SCHEDULE

14 SUPPLEMENTARY EC TYPE EXAMINATION CERTIFICATE

LCIE 03 ATEX 6297 / 03

18 ESSENTIAL HEALTH AND SAFETY REQUIREMENTS

Covered by standards EN 60079-0:2009, EN 60079-1:2007 and EN 60079-31:2009.

19 ROUTINE VERIFICATIONS AND TESTS

None.

